

# SECTION CORNER RECORD

NQ7

## VERMILLION COUNTY SURVEYOR'S OFFICE

State Plane grid coordinates NAD83 (2011):

Corner 2: North: 1777332.27 East: 2849681.84 (U.S. survey feet)

Type of monument: INDOT TYPE C MONUMENT (brass plug in concrete)

Depth: flush with adjacent grade

Indiana tie card references:

IN02\_T20NR9W33\_72 IN02\_T20NR9W32\_80

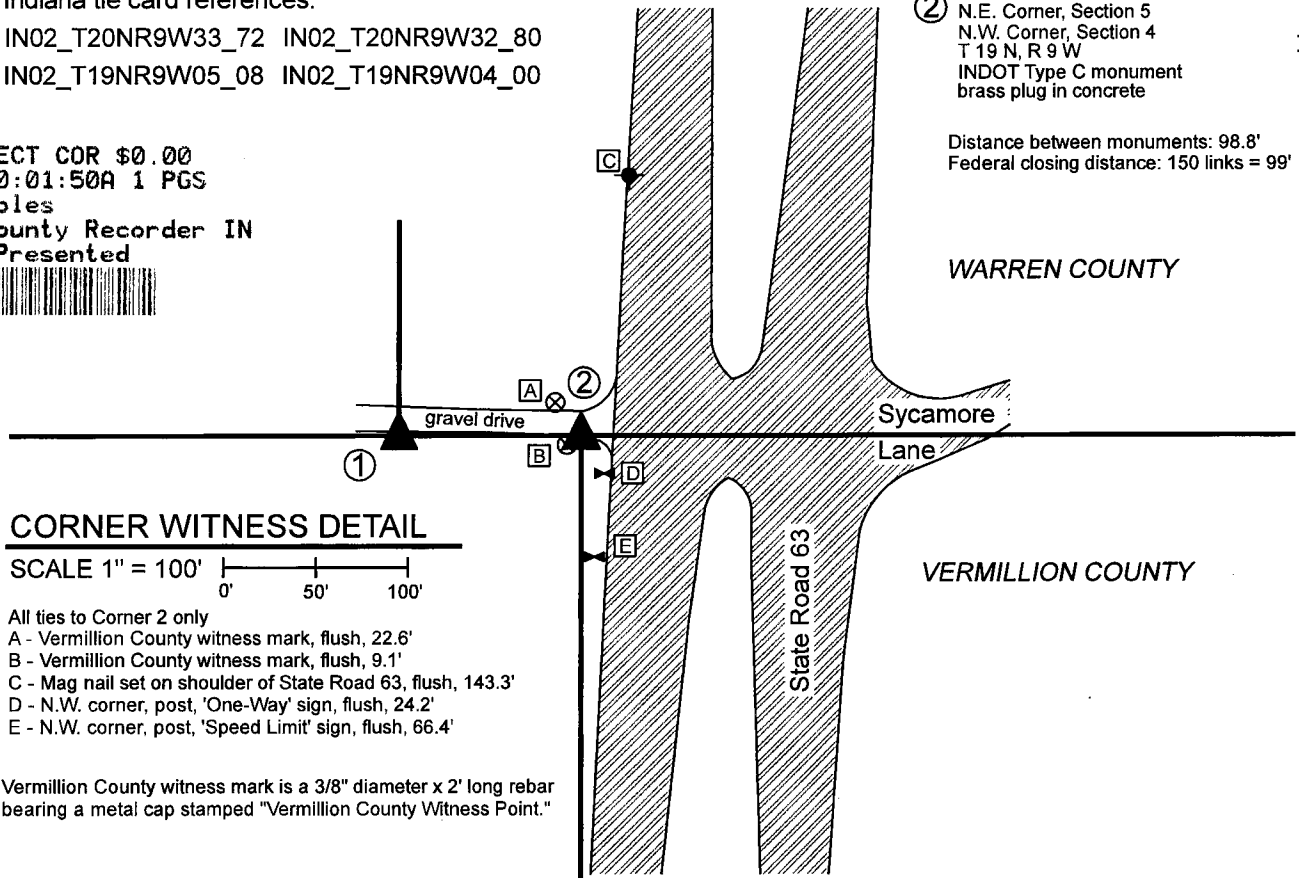
IN02\_T19NR9W05\_08 IN02\_T19NR9W04\_00

① S.E. Corner, Section 32  
S.W. Corner, Section 33  
T 20 N, R 9 W  
Warren County corner  
INDOT Type C Monument  
brass plug in concrete

② N.E. Corner, Section 5  
N.W. Corner, Section 4  
T 19 N, R 9 W  
INDOT Type C monument  
brass plug in concrete

Distance between monuments: 98.8'  
Federal closing distance: 150 links = 99'

24000847 SECT COR \$0.00  
05/2024 10:01:50A 1 PGS  
Jennifer Peebles  
Vermillion County Recorder IN  
Recorded as Presented



### CORNER WITNESS DETAIL

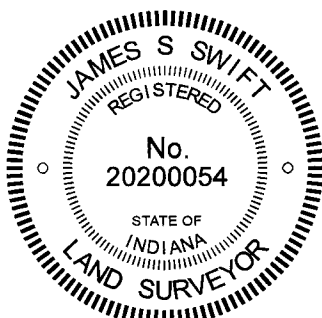
SCALE 1" = 100'

All ties to Corner 2 only

- A - Vermillion County witness mark, flush, 22.6'
- B - Vermillion County witness mark, flush, 9.1'
- C - Mag nail set on shoulder of State Road 63, flush, 143.3'
- D - N.W. corner, post, 'One-Way' sign, flush, 24.2'
- E - N.W. corner, post, 'Speed Limit' sign, flush, 66.4'

Vermillion County witness mark is a 3/8" diameter x 2' long rebar bearing a metal cap stamped "Vermillion County Witness Point."

The brass plug in concrete was found in place and held as marking Corner 2, being the northeast corner of Section 5 and northwest corner of Section 4. This monument is shown on the plans for State Road 63, per plans supplied by INDOT, Project No. FTF-306 (11), fiscal year 1977. The plans label this corner as "Monument Type C required, Approx. Sec. Cor., No Stone Found." The found monument is believed to be the monument set per those plans, in the position as called for in the plans. Given the substantial amount of fill material and obvious disruption of the original grade, no stone or older evidence of the corner is likely to be found, nor does ancient local evidence in the immediate vicinity of the corner remain. The found monument is known to have been held for private surveys in the vicinity, including a survey by Frank T. Luse, recorded as Instrument 2013001380, Office of the Vermillion County Recorder. Corner 1, being the corner for the sections in Warren County, is also shown on the INDOT plans. An INDOT Type C Monument was found marking this corner. Per the federal field notes for the original survey of Sections 4 and 5, dated October 19, 1820, Corner 1 is 150 links (99 feet) west of Corner 2. The two monuments were found to be separated by 98.8'.



*Ronald A. Mack*  
Ronald A. Mack, County Surveyor

*James S. Swift*  
James S. Swift, IN LS 20200054  
August 30, 2022

Mound  
Township  
Warren  
County

Highland  
Township  
Vermillion  
County

Section 32 T20N, R9W	Section 33 T20N, R9W
Section 5 T19N, R9W	Section 4 T19N, R9W

