

SECTION CORNER RECORD

N02-E.5

VERMILLION COUNTY SURVEYOR'S OFFICE

State Plane grid coordinates NAD83 (2011):

North: 1768647.98 East: 2831727.81 (U.S. survey feet)

Type of monument: 5/8-inch diameter rebar with metal cap stamped 'Vermillion County Surveyor'

Depth: 10 inches below adjacent grade

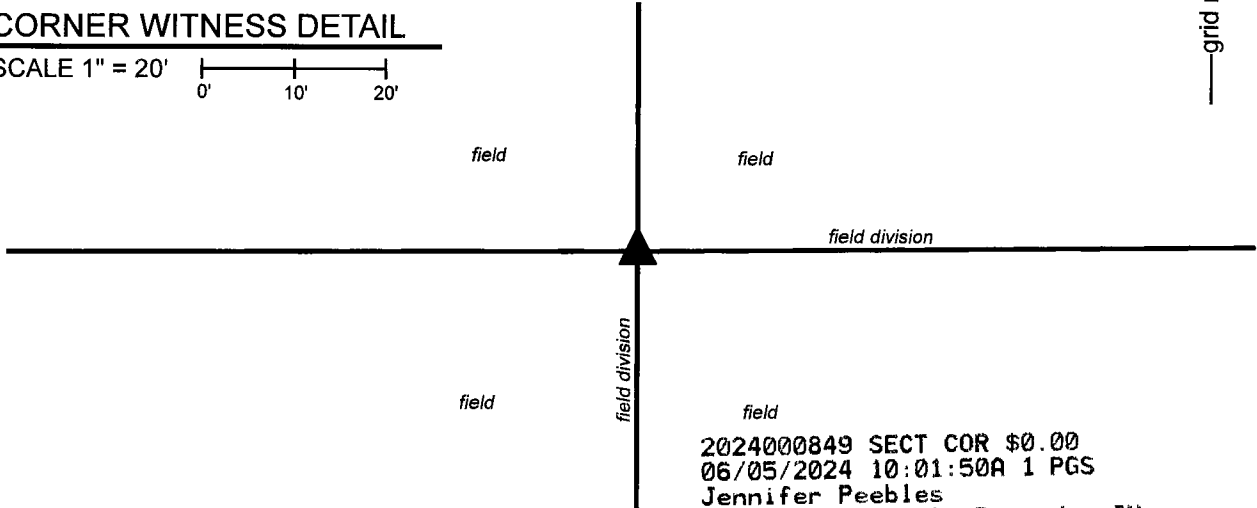
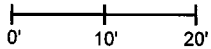
Indiana tie card references:

IN02_T19NR10W17_76 IN02_T19NR10W20_04



CORNER WITNESS DETAIL

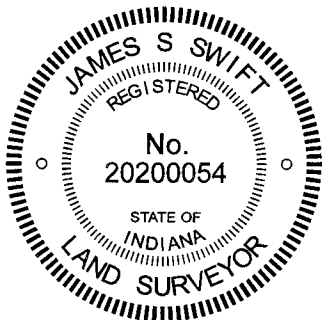
SCALE 1" = 20'



2024000849 SECT COR \$0.00
06/05/2024 10:01:50A 1 PGS
Jennifer Peebles
Vermillion County Recorder IN
Recorded as Presented



The rebar with Vermillion County Surveyor cap was set in place of a rebar found. The rebar was set as part of a survey by J. Reese Harpel, LS No. 2000203, recorded as Instrument 2018000504 in the Office of the Vermillion County Recorder. The survey states that the rebar was set in the center of an 8-inch round hole in the center of a concrete pad, evidently being the position where a post formerly stood. The rebar was found undisturbed, but the concrete pad was somewhat disturbed. It appears that the concrete is not thick and has been broken by being hit by agricultural equipment. Nonetheless, the position of the rebar fit with the relative position of other found monuments, per the Harpel survey, and fit well with surrounding corners. Several small rocks were found in the vicinity, none of which could be positively identified as being corner stones, purposely set to mark the corner. The position of the rebar was held as marking the corner. The rebar was removed and replaced with a new 24-inch length of rebar on November 9, 2023. Given how close to the corner it appears that the land is being plowed, and given the fact that the concrete pad found by Harpel is mostly destroyed, the new rebar was set at 10 inches deep to protect it from being disturbed by adjacent farming operations. No objects are available nearby to provide distance ties. The rebar is amidst a small pile of rocks. No witness post was set as so as to not interfere with agricultural operations adjacent to this corner.



Ronald A. Mack, County Surveyor

James S. Swift, IN LS 20200054
December 6, 2023

Highland Township

