

SECTION CORNER RECORD

BL11

VERMILLION COUNTY SURVEYOR'S OFFICE

State Plane grid coordinates NAD83 (2011):

North: 1688041.82 East: 2860331.54 (U.S. survey feet)

Type of monument: STONE (hole at high point)

Depth: 10 inches above grade

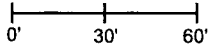
Indiana tie card references:

IN02_T17NR9W27_80 IN02_T17NR9W26_72

IN02_T17NR9W34_08 IN02_T17NR9W35_00

CORNER WITNESS DETAIL

SCALE 1" = 60'



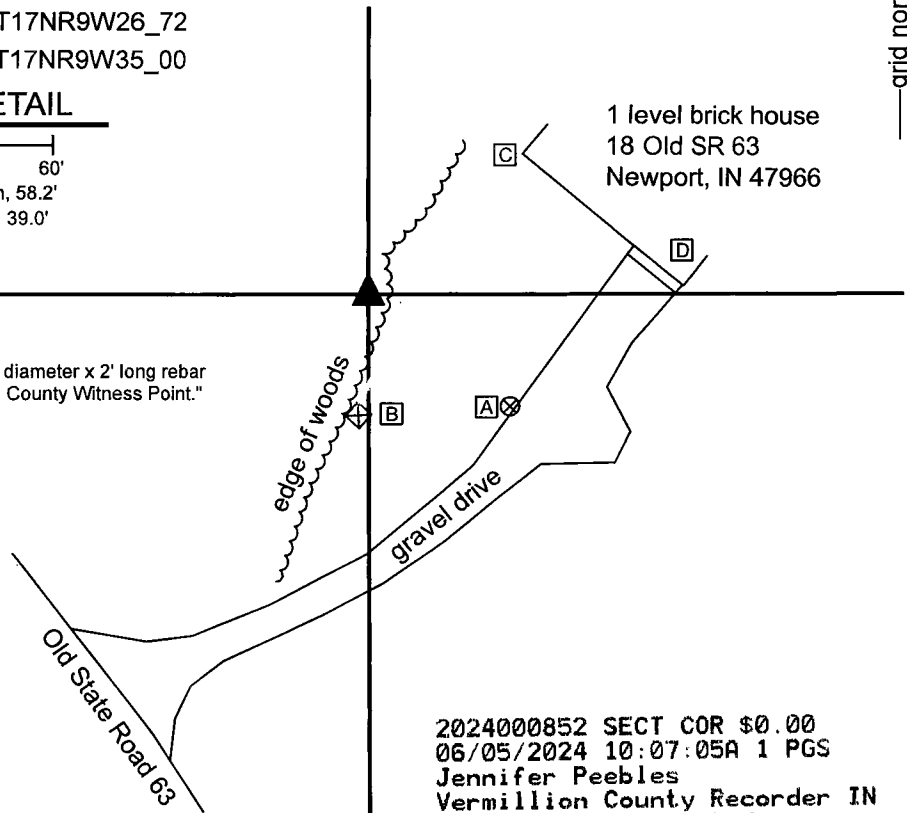
A - Vermillion County witness mark, flush, 58.2'

B - East Corner of concrete R/W marker, 39.0'

C - S.W. Corner of house, 5' a.g., 67.2'

D - S.E. Corner of house, 5' a.g., 101.1'

Vermillion County witness mark is a 3/8" diameter x 2' long rebar bearing a metal cap stamped "Vermillion County Witness Point."



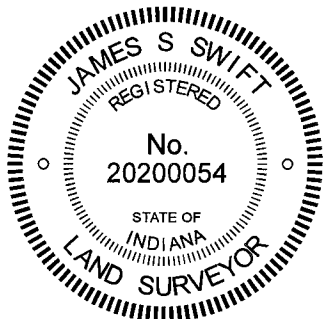
grid north

2024000852 SECT COR \$0.00
06/05/2024 10:07:05A 1 PGS
Jennifer Peebles
Vermillion County Recorder IN
Recorded as Presented



The stone was found in place and held as marking the corner.

This stone is shown on a Vermillion County Surveyor tie card dated August 7, 1989. The stone protrudes approximately 10 inches out of the ground, and measures 17 inches by 10 inches tapering to 3 inches on top. A 1/2-inch diameter hole was drilled into the top, center of the rock to mark the position of the corner. The stone is known to have been held as marking the corner for numerous surveys in the vicinity including a survey by James Reese Harpel recorded as Instrument 2020001681, Office of the Vermillion County Recorder.



Ronald A. Mack
Ronald A. Mack, County Surveyor

James S. Swift

James S. Swift, IN LS 20200054

August 30, 2022

Vermillion Township

Section 27 T17N, R9W	Section 26 T17N, R9W
Section 34 T17N, R9W	Section 35 T17N, R9W